

Series II

diesel generators

At the heart of every MasPower Series II generator is a YanMar diesel engine. The YanMar reputation for rugged dependability in extreme conditions makes it a natural choice. These engines are known for their quiet-running, fuel-efficient design and reliable operating history. When combined with a quality generator and control panel, the Series II gensets are an unbeatable combination. All models are available with a premium sound enclosure for superior noise abatement. Series II generators are rated from 13 to 22.5 kw output and have an impressive list of standard features and options.

STANDARD FEATURES

- Stainless Steel Drip Pan
- Stainless Mounting Supports with Rubber Isolators
- Stainless Steel Belt Guard
- Freshwater Cooling/Heat Exchanger
- Water Cooled Exhaust Elbow
- Fuel Lines Plumbed to Stainless Connection Block
- Oil Change Hose Plumbed through Pan
- 12V Electric Fuel Pump
- Convenient Single Side Service Safeties:
 - Low Oil Pressure
 - High Coolant Temperature
 - High Exhaust Temperature

STANDARD CONTROLS:

(Generator Mounted)
Circuit Breaker
Hourmeter
On/Off Switch

Plus the MasPower Series II offers an impressive selection of options to accommodate demanding custom installations:

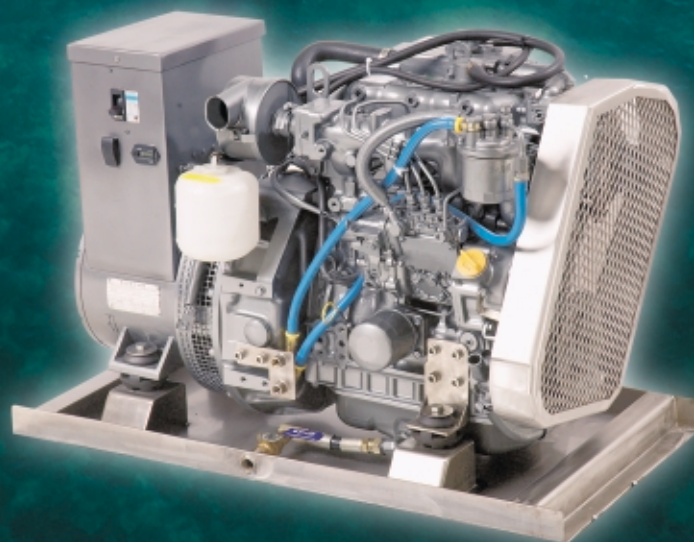
OPTIONAL EQUIPMENT:

- Plug-In Extension Wiring Harnesses (5', 10', 20', 50', 100')
- Remote Instrument Panel
 1. Start/Stop and Hourmeter
 2. Four Gauge Panel
 - Oil Pressure
 - Coolant Temp.
 - AVC Volts
 - AVC Amps
- Deluxe Digital Controller
 - Measures all Generator and Engine Parameters
- Auto Start
- Siphon Break
- Exhaust Kit
- Super Quiet Sound Shields



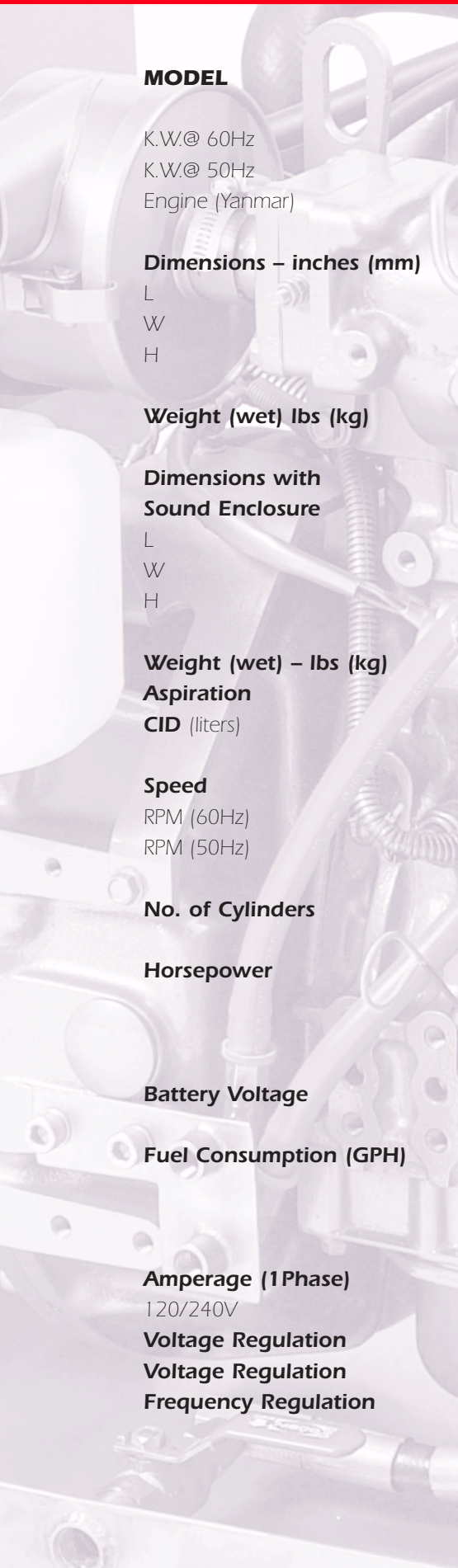
MAS POWER

**For quiet,
reliable,
efficient
power,
choose
MasPower
Series II
diesel
generators**



2801 Anvil Street North
St. Petersburg, Florida 33710
727.522.9471
Fax: 727.527.7013
Sales Order Line: 800.545.4574

MasPower Series II Marine Diesel Gensets



MODEL	MP13M	MP16M	MP18M	MP22.5M
K.W.@ 60Hz	13	16	18	22.5
K.W.@ 50Hz	11	13	15	19
Engine (Yanmar)	3TNE88	3TNE84-T	4TNE88	4TNE84T
Dimensions – inches (mm)				
L	39 (990.6)	39 (990.6)	40.75 (1035)	40.75 (1035)
W	20.25 (514.4)	20.25(514.4)	20.25 (514.4)	20.25 (514.4)
H	25.5 (647.7)	25.5 (647.7)	25.75 (654.05)	25.75 (654.05)
Weight (wet) lbs (kg)	700 (317.5)	710 (322)	785 (356)	810 (371.9)
Dimensions with Sound Enclosure				
L	41 (1041.4)	41 (1041.4)	46 (1168.4)	46 (1168.4)
W	25 (635)	25 (635)	25 (635)	25 (635)
H	27.75 (704.9)	27.75 (704.9)	27.75 (704.9)	27.75 (704.9)
Weight (wet) – lbs (kg)	805 (365)	815 (369.6)	910 (412.7)	940 (426.3)
Aspiration	Natural	Turbo	Natural	Turbo
CID (liters)	100.21 (1.642)	91.3 (1.496)	133.66 (2.19)	121.74 (1.995)
Speed				
RPM (60Hz)	1800	1800	1800	1800
RPM (50Hz)	1500	1500	1500	1500
No. of Cylinders	3	3	4	4
Horsepower				
1800 RPM		22.7	25.2	30.5 38.5
1500 RPM		18.1	21.2	24.7 30.2
Battery Voltage	12V		12V	12V 12V
Fuel Consumption (GPH)				
100% Load		1.15	1.34	1.50 1.90
75% Load		.87	1.03	1.18 1.47
Amperage (1Phase)				
120/240V	108.3/54.17	133.4/66.67	150/75	187.5/93.75
Voltage Regulation	Electronic	Electronic	Electronic	Electronic
Voltage Regulation	+3%	+ 3%	+3%	+3%
Frequency Regulation	+4%	+4%	+4%	+4%